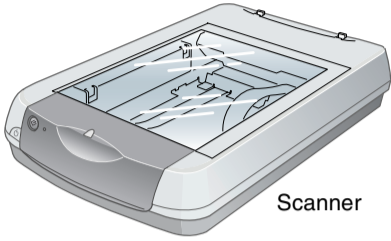


Start Here

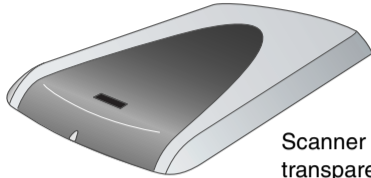
EPSON Perfection® 4870 Pro

1 Unpack Your Scanner

- 1 Make sure you have all the parts shown below for your EPSON® scanner:



Scanner



Scanner cover/
transparency unit



CD-ROM with EPSON Scan driver, software, and electronic manuals



Adobe® Photoshop® Elements 2.0 CD-ROM



LaserSoft® SilverFast® CD-ROM



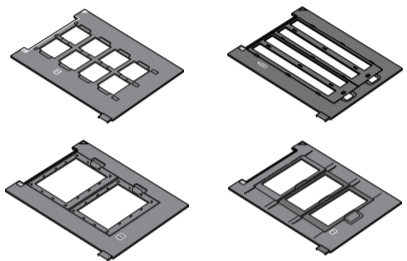
ArcSoft® Software Suite CD-ROM



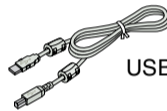
MonacoEZcolor™ CD-ROM



Document mat



Film holders

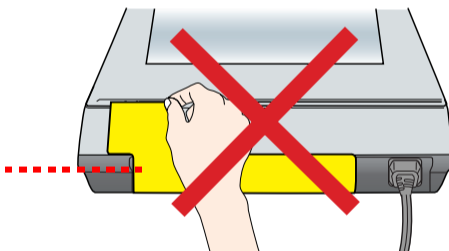


USB cable

Note: If you'll be connecting your scanner using IEEE 1394 (FireWire® or iLink™), you'll need to purchase an IEEE 1394 cable (not included).

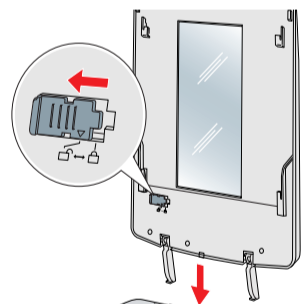
- 2 Remove all the packing tape, but leave the large stickers in place until you are instructed to remove them.

IMPORTANT!
Leave the sticker in place until you are instructed to remove it

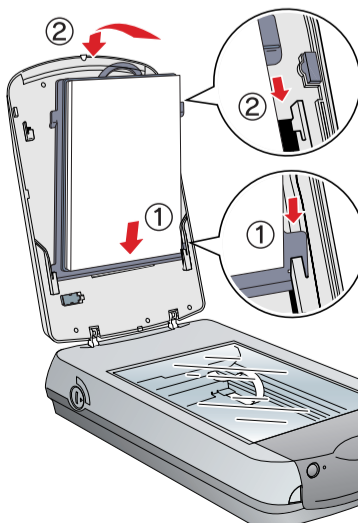
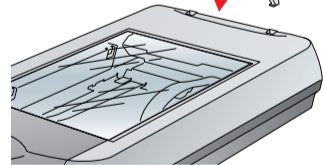


- 3 Insert the hinges on the cover into the square holes at the back of the scanner.

- 4 Remove the sticker, then slide the transportation lock to the unlocked position.



- 5 Attach the document mat. Hold the top of the document mat and slide it down gently along the document cover. Make sure the tabs on the bottom and sides of the document mat fit in the slots on the document cover.



- 6 Close the cover.

2

Install the Software

Wait! You must install your software before connecting the scanner to your computer. The installation process may take several minutes. Be sure to close all open programs and turn off any virus protection programs.

The software works with Windows® 98, Me, 2000, and XP, and Macintosh® OS 8.6 to 9.x and OS X 10.2.x. Follow the steps below (for Windows), or the steps in the next column (for Macintosh).

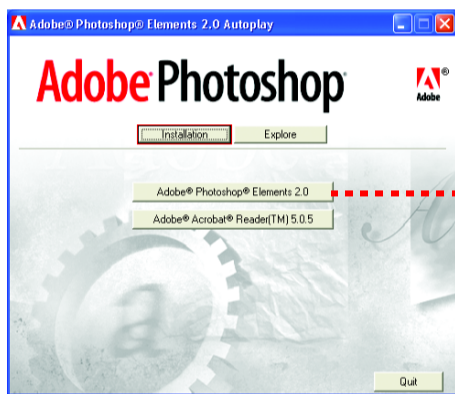
Note: If you don't already have Adobe Photoshop or Photoshop Elements on your computer, install Photoshop Elements from the CD-ROM included with your scanner.

Windows

First you'll install Adobe Photoshop Elements, then your scanner software.

Photoshop Elements

- 1 Insert the Adobe Photoshop Elements CD-ROM in the CD-ROM or DVD drive. The installer starts automatically. At the first screen, click **Next**.
- 2 Make sure **US English** is selected and click **Next**.
- 3 Follow the on-screen instructions to begin installation and accept the software license conditions.
- 4 When you see this screen, click the **Adobe Photoshop Elements** button.



Click **Adobe Photoshop Elements**

- 5 Follow the on-screen instructions. When you're asked for a serial number, enter the number printed on the sticker attached to the CD-ROM sleeve.
If you don't have Acrobat Reader®, eject the CD-ROM and repeat steps 1 to 3. Then select **Adobe Acrobat Reader** to install it.

Remove the CD-ROM and install the scanner software as described below.

Scanner Software

- 1 Insert the scanner software CD-ROM in the CD-ROM or DVD drive. The installer starts automatically. If it doesn't start, do the following:
 - Windows XP: Click **Start**, click **My Computer**, then double-click the **EPSON CD-ROM** icon.
 - Windows 98, Me, and 2000: Double-click **My Computer**, then double-click the **EPSON CD-ROM** icon.
- 2 At the language selection screen, select your preferred language.
- 3 When you see the antivirus software message, click **Continue**.
- 4 Read the license agreement, then click **Agree** to continue.
- 5 At the Software Installation screen, click **Install**. The software installs automatically.



Click **Install**

- 6 At the end of the installation, click **Exit**.
- 7 Register your scanner when prompted, then remove the CD-ROM.

Install LaserSoft SilverFast, MonacoEZcolor, and the ArcSoft Software Suite, following the instructions included with each program.




Then follow the instructions in section 3 to connect the scanner.

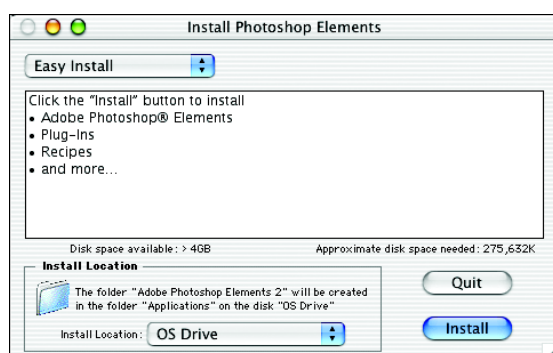
Macintosh

Note: EPSON Scan does not support the UNIX® File System (UFS) for Mac® OS X. You must install the software on a disk or in a partition that does not have UFS.

First you'll install Adobe Photoshop Elements, then your scanner software.

Photoshop Elements


- 1 Insert the Adobe Photoshop Elements CD-ROM in the CD-ROM or DVD drive.
- 2 Double-click the  or  CD-ROM icon and double-click the  English folder.
- 3 Double-click the **Install Photoshop Elements** icon.
- 4 Follow the on-screen instructions to begin installation, and accept the software license conditions. In Mac OS X, enter your administrator name and password, then click **OK**.
- 5 When you're asked for a serial number, enter the number printed on the sticker attached to the CD-ROM sleeve.
- 6 When you see this screen, click the **Install** button.




- 7 Follow the on-screen instructions to install the software.
- 8 When you're finished, click **Quit**.
- 9 If you don't have Acrobat Reader, you can install it from the CD-ROM. Open the Adobe Acrobat Reader folder. Then double-click the **Reader Installer** icon to install it.

Remove the CD-ROM and continue with the following instructions to install the scanner software.

Scanner Software

- 1 Insert the scanner software CD-ROM in the CD-ROM or DVD drive. Double-click the  **EPSON** CD-ROM icon, if necessary.
- 2 Double-click the **EPSON** icon.
- 3 At the language selection screen, select your preferred language.
- 4 When you see the antivirus software message, click **Continue**.
- 5 Read the license agreement, then click **Agree** to continue.
- 6 At the Software Installation screen, click **Install**. Enter your administrator name and password, if necessary.



Note: If you're installing on Macintosh OS 8.6 to 9.x, you may see a prompt to update your Carbon Library. After the CarbonLib installation is complete and you've restarted your system, double-click the  **EPSON** icon, then follow the steps above to continue the installation.

- 7 Follow the on-screen instructions to install the software. If you are prompted to restart, click **Quit**.
- 8 At the end of the installation, click **Exit**.
- 9 Register your scanner when prompted, then remove the CD-ROM.

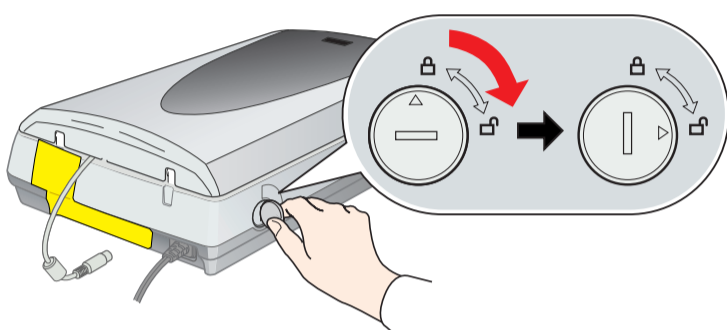
Install LaserSoft SilverFast, MonacoEZcolor, and the ArcSoft Software Suite, following the instructions included with each program.

Then follow the instructions in section 3 to connect the scanner.

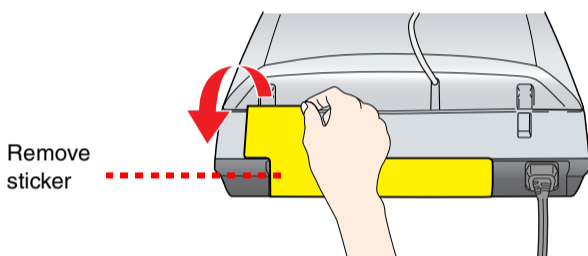
3 Connect the Scanner

After your software is installed, it's time to connect your scanner.

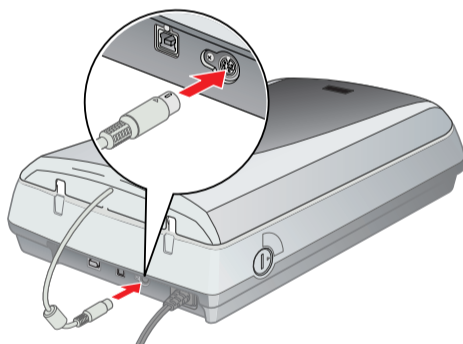
- 1 Remove the sticker from the transportation lock. Use a coin to turn the lock clockwise one-quarter turn to unlock the scanner carriage.



- 2 Remove the sticker from the back of the scanner.



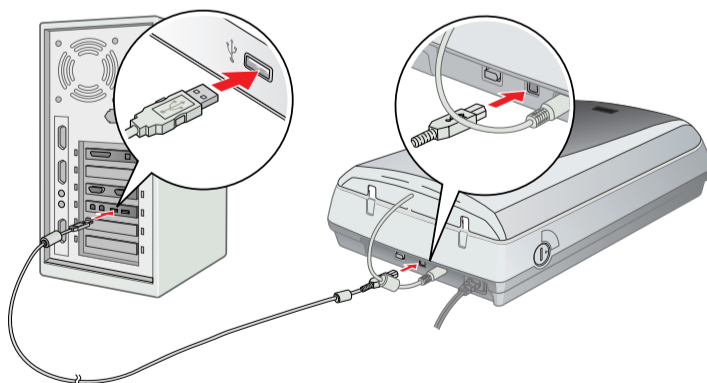
- 3 Connect the cable for the built-in transparency unit (scanner cover). Make sure the notch and arrow on the connector are facing up.



- 4 Connect either the USB cable that came with the scanner or an optional IEEE 1394 (FireWire) cable. **Do not connect both cables.**

If you're using USB

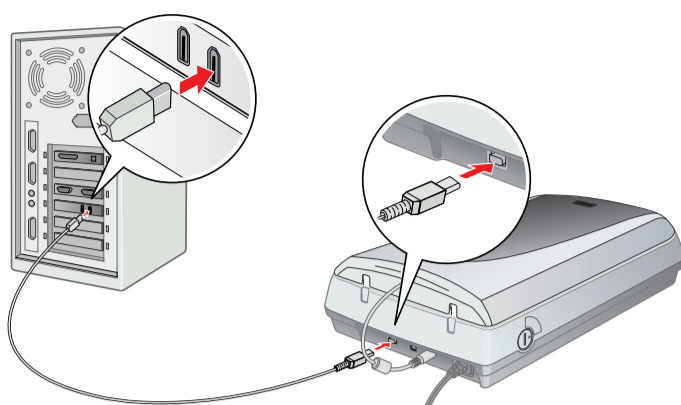
Plug the square end of the USB cable into the scanner's USB port. Then plug the flat end into any available USB port on your computer or hub.




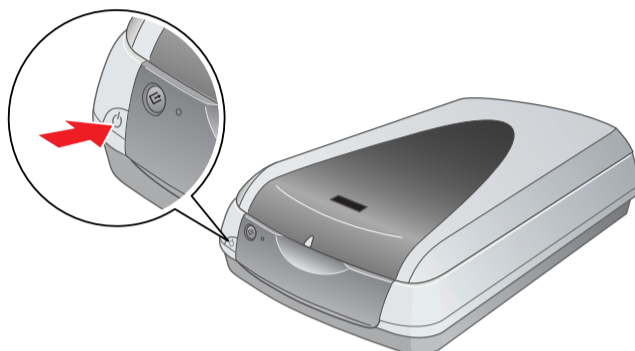
Note: Your scanner may not work correctly if you use a USB cable other than the one supplied by EPSON or if you connect your scanner through more than one hub.

If you're using IEEE 1394 (FireWire)

Plug one end of the IEEE 1394 cable (not included) into the scanner's IEEE 1394 port. Then plug the other end into the IEEE 1394 (FireWire or iLink) port on your computer.



- 5 Plug the scanner's power cord into an electrical outlet.
- 6 Make sure the cover is closed, then press the  power button on the front of the scanner to turn it on.



The scanner turns on and the indicator light flashes green. It stops flashing and turns green when the scanner is ready.

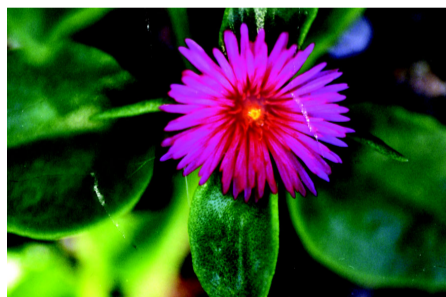
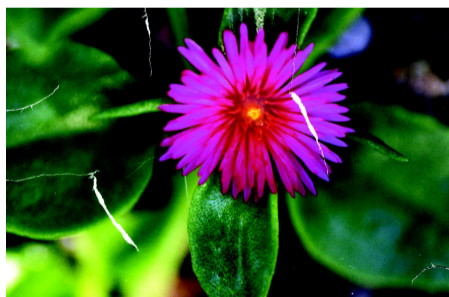
Getting the Most From Your Scanner

The following sections contain overviews of how to get the most out of your professional scanner and its software. For detailed instructions, see the electronic or printed manuals for each software application. The SilverFast CD-ROM also contains useful QuickTime® tutorials.

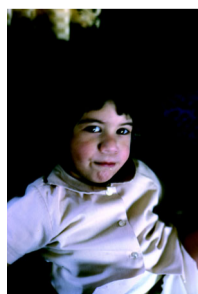
Enhancing Your Photos

EPSON Scan includes several features to improve your scans, including DIGITAL ICE™ Technology, Color Restoration, and Dust Removal (for film). For details on using these features, see your *Quick Guide* booklet or on-screen *Perfection 4870 Reference Guide*.

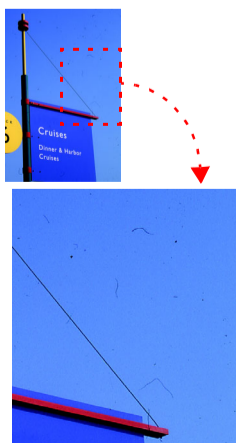
Before and After DIGITAL ICE for Photo Print



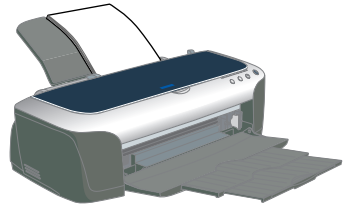
Before and After Color Restoration



Before and After Dust Removal



Managing Color Data



You can use MonacoEZcolor™ and your device software to provide accurate color data among all your computer input and output devices such as your scanner, monitor, digital camera, and printer. Here are the basic steps you need to take to manage color for scans that you will print. See your MonacoEZcolor online guides for detailed instructions.

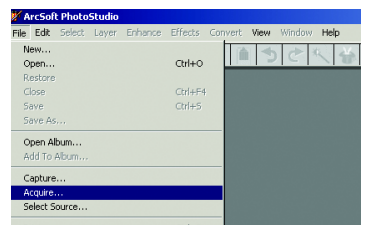
- 1** First you need to use the **Create Printer Profile** option in MonacoEZcolor to create profiles for your scanner and printer.
You must create profiles for each type of print media and settings.
Print an RGB Target with the printer, type of paper, and settings you will use when printing images.
- 2** Open Adobe Photoshop Elements and choose **Full Color Management - Optimized for Print** under the Color Settings.
- 3** Select **File > Import > SilverFast (Epson)**. Then prescan your image and adjust the marquee.
- 4** Click the **General** tab, then click the **Option** (or **Options**) button. Click the **CMS** tab.
- 5** For the Input -> Internal setting, select **Image Color Matching (ICM)** in Windows or **ColorSync** in Macintosh.
- 6** For the Internal -> Output setting, select **<RGB>**.
- 7** For the Scanner (Reflective), select the scanner profile you created with MonacoEZcolor in step 1. For the Internal setting, select a working space that has a wide color gamut, such as **Adobe RGB (1998)**.
- 8** Make sure the **Embed ICC profile** box is checked to save the settings in your scan, then click **OK**.
- 9** Click **Scan** to scan your image.
- 10** Click **File > Print Preview**. Click the **Show More Options** box, then select **Color Management** from the drop-down box. Select the printer profile you created in step 1 for the paper you're going to print on.
- 11** Click **Print**, check your settings in your printer software (making sure that color management is turned off and all the settings are the same as you set them when creating your printer profile with MonacoEZcolor), close your printer software, and then click **OK** to print your image.

Note: See your electronic SilverFast manual and movies on the SilverFast CD-ROM for detailed color space and color management information. To view the manual and movies, you'll need Adobe Acrobat Reader and QuickTime 6.0 or later. Acrobat Reader is included on your CD-ROM.

Scanning 48-bit Images

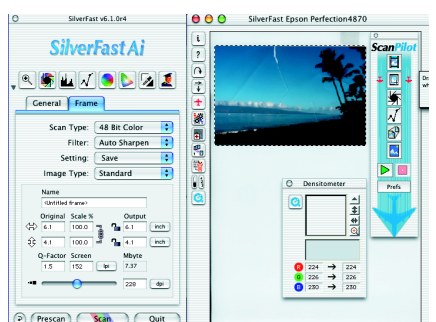
To obtain images in the full 48-bit color depth that your scanner offers, you can scan into ArcSoft PhotoStudio® with EPSON Scan. You can also scan an image with the stand-alone SilverFast application.

- 1** Raise the scanner lid and place your photo face down on the glass. Make sure the document mat is in place on the scanner lid.
- 2** In Windows or Mac OS 9.x, use **Acquire** in PhotoStudio with **Epson Perfection 4870** selected as the source.



In Mac OS X, open the stand-alone SilverFast application (SF-App) and scan a 48-bit file. Open the image in PhotoStudio for editing.

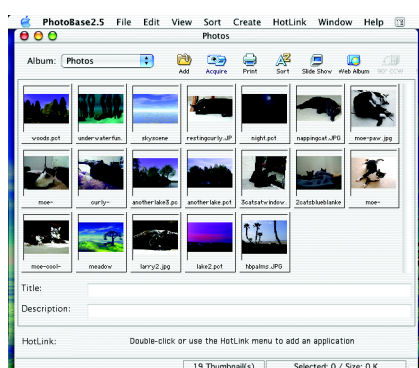
Note: If you have the full version of Photoshop (6.0 or later), you can scan 48-bit images directly with SilverFast or EPSON Scan.



More Scanning Options

Here are more ways to get the most out of your scanner and software:

- Use the SilverFast Ai Job Manager for high-capacity batch scanning.
- Organize all your photos into albums which you can easily archive to CD or display in slideshows using ArcSoft PhotoBase.™







- Stitch individual photos into wide panoramas or tall views with ArcSoft PanoramaMaker.™



- Create unique artistic creations or effects with your scanned images using Photoshop Elements or PhotoStudio.
- Scan documents and save them as files that you can edit with Word® or other word processing applications, using ABBY® FineReader®. See your *Quick Guide* booklet or the *ABBYY FineReader User's Guide* or Help for instructions.

Problems?

First, check the indicator light on the scanner.

	Flashing green	Warming up or scanning.
	Green	Ready to scan.
	Flashing red	Make sure both transportation locks are unlocked. Try restarting your computer and turning the scanner off and then on again. If the red light is still flashing, contact your dealer or EPSON.
	Off	Make sure the scanner is connected to your computer and turned on.

If your problem is listed here, try these suggestions.

The New Hardware Wizard appears on your screen.	Click Cancel and follow the steps in "Install the Software" on the other side of this sheet. Disconnect the scanner before installing the software.
The scanner makes a grinding noise when it is turned on.	Make sure both transportation locks are unlocked.
You see a message about a HI-SPEED USB device in Windows XP.	Click the x in the corner of the message to close it. Your scanner will work correctly.
You see an error message when you try to scan, or the scanner doesn't scan.	Make sure the scanner is connected to your computer, plugged into a power source, and the power switch is turned on. Make sure both transportation locks are unlocked.

Questions?

Here's where to look for answers:

Quick Guide

See your *Quick Guide* for instructions on using DIGITAL ICE Technology, scanning film and text, and basic troubleshooting.

On-Screen Reference Guide

Double-click the **Perfection 4870 Reference Guide** icon on your desktop. If you didn't install it, insert the scanner software CD-ROM in the CD-ROM or DVD drive. At the Custom Installation screen, select **Scanner Reference Guide** only, then click **Install**. You must have Microsoft® Internet Explorer, Netscape® Navigator (versions 5.0 or later), or Apple® Safari™ (version 1.0 or later) to read the *Reference Guide*.

On-Screen Help for EPSON Scan

Click the **Help** button or question mark that appears on the screen when you're using these programs.

EPSON Technical Support

EPSON provides technical assistance 24 hours a day through the electronic support services and automated telephone services described below:

- **World Wide Web**
From the Internet, you can reach EPSON Support at <http://support.epson.com>.
- **Automated Telephone Services**
To use Automated Telephone Services, you must have a touch tone telephone and call (800) 922-8911. Your EPSON SoundAdvice™ Express Code is 70490. Use it to quickly select your scanner in SoundAdvice.
- **To Speak to a Customer Service Representative**
Dial (562) 276-4382 (U.S.) or (905) 709-3839 (Canada), 6 AM to 6 PM, Pacific Time, Monday to Friday. Toll or long distance charges may apply.

Before you call, please have the following information ready:

- Product name (EPSON Perfection 4870 Pro)
- Product serial number (located on the back of the scanner)
- Proof of purchase (such as a store receipt) and date of purchase
- Computer configuration
- Description of the problem

Software Technical Support

Software	Telephone*/Fax*	Internet and E-mail
EPSON Scan	U.S.: (562) 276-4382 Canada: (905) 709-3839 6:00 AM to 6:00 PM, Pacific Time, Monday to Friday	support.epson.com
ABBYY FineReader Sprint	(510) 226-6719 fax: (510) 226-6069	www.abbyyusa.com support@abbyyusa.com
Adobe Photoshop Elements	(206) 675-6126 6:00 AM to 5:00 PM, Pacific Time, Monday to Friday (pay support)	www.adobe.com/support techdocs@adobe.com
ArcSoft application software	(510) 440-9901 8:30 AM to 5:30 PM, Pacific Time, Monday to Friday	www.arcsoft.com/techmain.htm support@arcsoft.com
LaserSoft Imaging™ SilverFast	(941) 383-7496 9:00 AM to 5:30 PM, Eastern Time, Monday to Friday (pay support) fax: (941) 387-7574	www.SilverFast.com support@SilverFast.com
Monaco Systems™ MonacoEZcolor	(978) 749-9944 9:00 AM to 5:00 PM, Eastern Time, Monday to Friday	www.monacosys.com/support.html support@monacosys.com

* Toll or long distance charges may apply.

EPSON is a registered trademark of SEIKO EPSON CORPORATION. EPSON Perfection is a registered trademark and SoundAdvice is a service mark of Epson America, Inc.

DIGITAL ICE is a trademark of Kodak.

General Notice: Other product names used herein are for identification purposes only and may be trademarks of their respective owners. EPSON disclaims any and all rights in those marks.

© 2003 Epson America, Inc. 11/03

CPD-16660
Printed in Singapore XXXXXX XX.XX-XX

